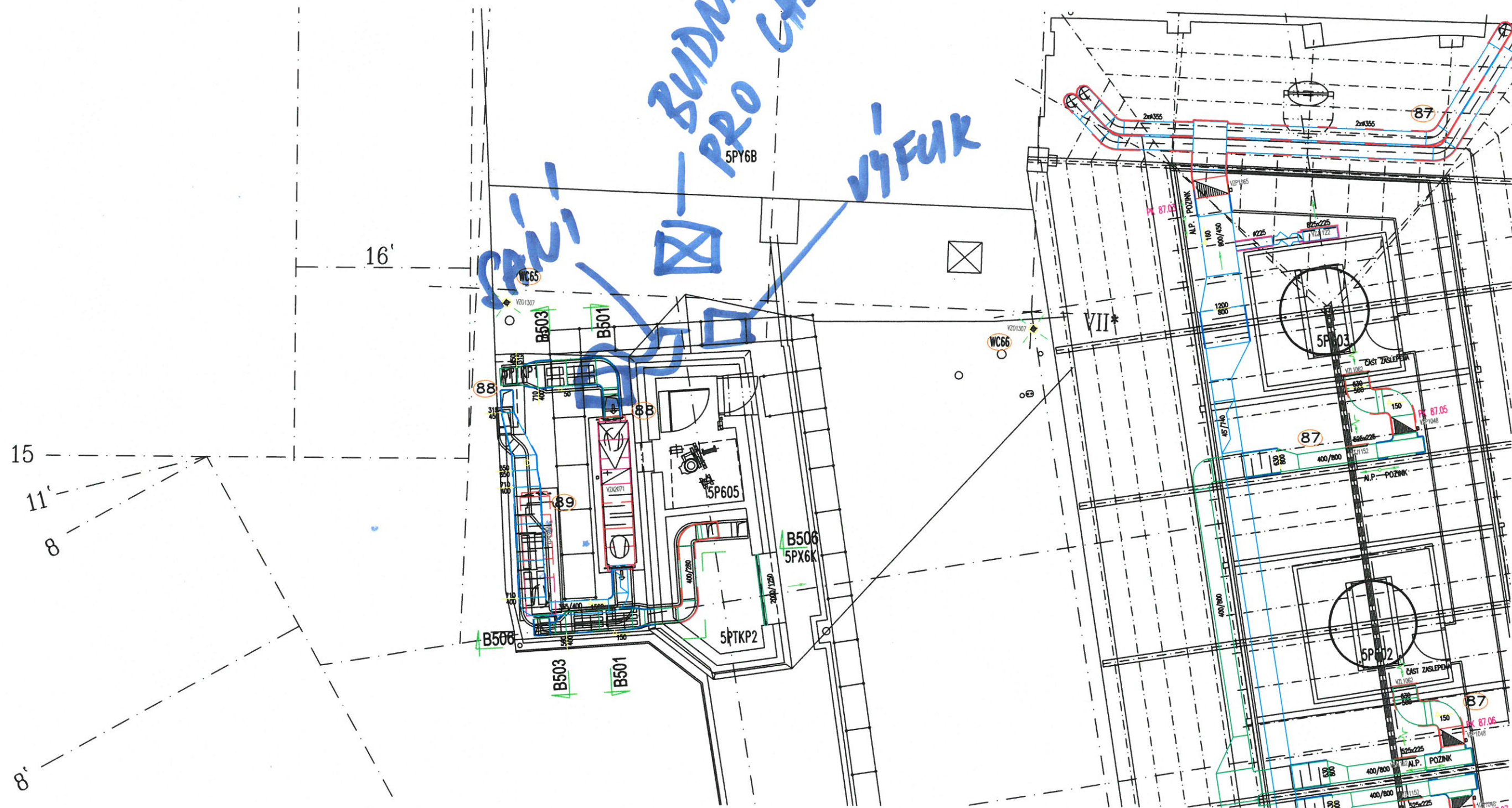


5PY6B

1
v9 Fulk



3



3

17

3PX6A

3PX7A

3P602

3P603

87

NIKA VZT 900/2400 S.H. = +16,300/

NIKA VZT 900/2400 S.H. = +16,300

90

90

16'

3P601B

3P601

WC65

WC65

3P601A

WC66

3P604

3P604B

3P604A

WC66

3PPKK1

88

88

3PPKK1

PBA 1000

76

77

810

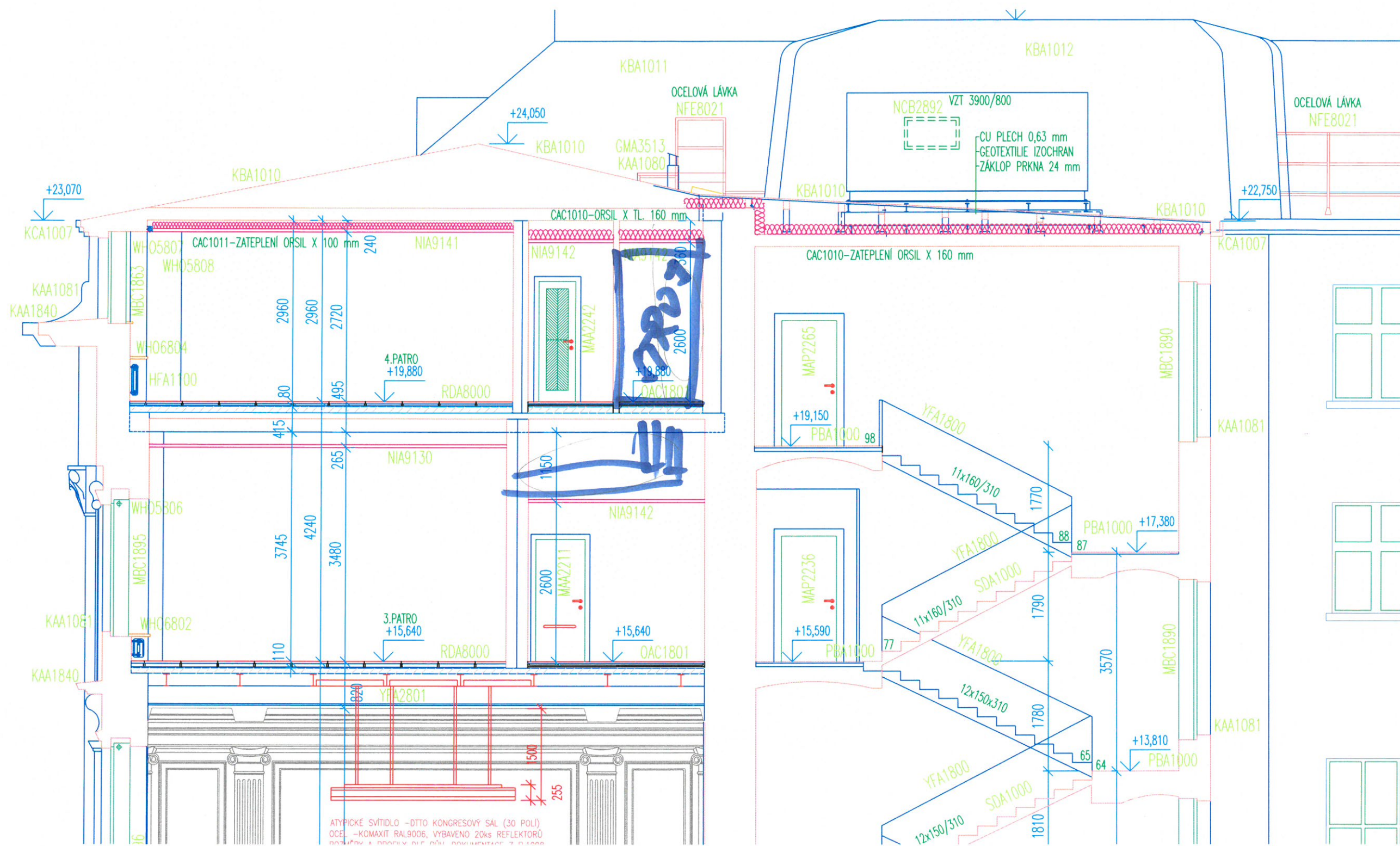
3PK1

3P820

VII*

SVETILO

3.NP



B402/B4C

B405

B404

DO 3P (400 x 250)

87 B403
B406

B403
B406

4P 427

86

86

87

4P609
86.001

86.020

PK 86.01

PK 86.03

$$\begin{array}{r} 700 \\ \hline 315 \end{array}$$

500 VZP1068

~~19.190~~
$$\begin{array}{r} 560 \\ + 19.440 \\ \hline \end{array}$$
~~+19.440~~

A

